

# Scandinavian Flooring

Solutions



## Concrete Flooring

Large pour, high tolerance  
and flood pour techniques

Ground and upper floors

Steel fibre, mesh or bar  
reinforcement

500m<sup>2</sup> to 100,000m<sup>2</sup>+



**Stuarts**

# Stuarts Industrial Flooring

Experts in insitu concrete flooring since the mid 1800's and one of Europe's largest specialist contractors in our sector.

**Stuarts Industrial Flooring is one of Europe's largest insitu concrete flooring contractors. Independently owned and founded in 1840 the company is by far the oldest and most experienced contractor in its market sector.**

The company's specialism is the installation of insitu concrete flooring to all surface tolerances on ground and upper floors up to and including floors to accommodate high specification narrow aisle forklift traffic.

Offering all types of concrete floor construction techniques, Stuarts install floors to meet a client's detailed floor slab specification and also offer a full design and build solution.

Operating with 9 Somero Laserscreed based in the UK and Scandinavia each machine is capable of levelling in excess of 2,000m<sup>2</sup> of concrete flooring per day. To complement this machinery the company owns and operates a substantial fleet of smaller plant including a "Manipav" laser screed machine.

To ensure that quality is maintained, and the company has the flexibility to accommodate most program requirements a team of almost 200 personnel are directly employed.

## Concrete Flooring Solutions

**Stuart's objective when providing a concrete flooring solution is to ensure that it offers its clients with the most appropriate and cost effective design solution to meet their requirements.**

The company has relationships and experience with all the major steel and steel fibre suppliers in Europe and regularly installs "jointless" and "saw cut" flooring solutions using steel fibre, steel fabric and bar reinforcement all finished to meet a clients requirements.

In addition to its work on the ground the company has developed techniques over many years that ensures that it can offer a product of the same quality when working on upper floor concrete construction on both concrete planks and metal decking.



As the market leader in its sector Stuart are able to offer bespoke design solutions for more specialist flooring applications incorporating insulation, underfloor heating / cooling and specialist floor finishes within its scope of work.

## Concrete Construction methods and services

- Large pour ground bearing floorslabs
- Large pour "suspended" pile supported slabs
- Traditional long strip high tolerance construction
- Large bay concrete installation to upper floors
- Monolithic flooring solutions
- Dry shake surface applications
- Floor Coatings and coverings
- Membranes and Floor Insulation
- Steel mesh and bar reinforcement
- Steel fibre reinforcement



# Project File: Vestby

**Stuarts Industrial Flooring were employed by GSE Norway to design and construct the ground bearing floorslab for the distribution facility they have built for Bulk Eiendom.**

Located 30 minutes south of Oslo this floorslab was installed over a two week period in conjunction with one of the company's SXP laserscreed machines.

This floorslab provides the high tolerance surface for Nille to operate their MHE equipment on in this 11.70m high distribution centre. To enhance its abrasion resistance the surface received a mechanically applied dryshake sprinkle.

Reinforced with steel mesh reinforcement sawn induced joints were formed on a 6m grid with all day joints reinforced and protected using proprietary permanent steel formwork

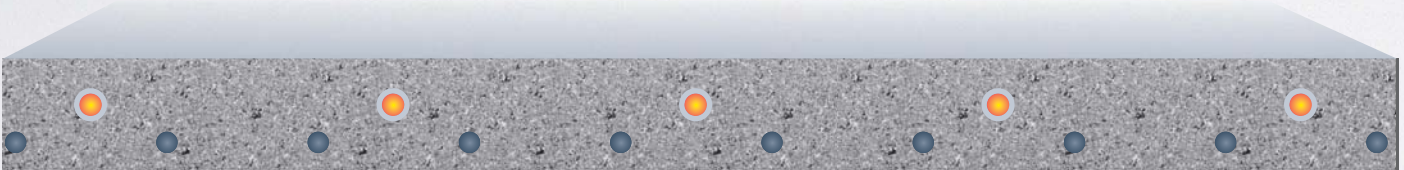
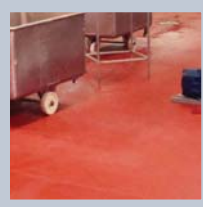
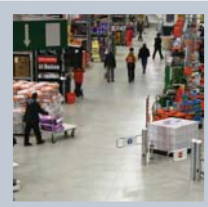
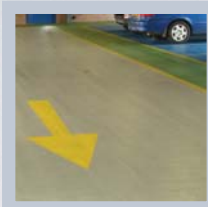
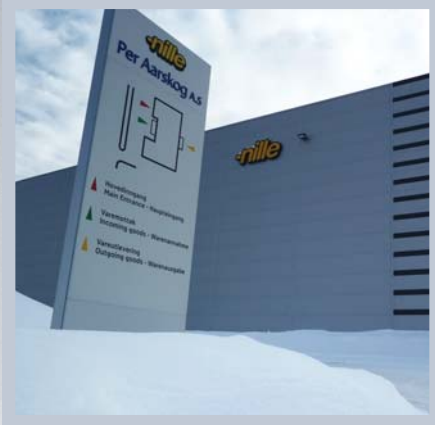
## Statistics:

- Overall area 20,000m<sup>2</sup>
- Approximately 4,000m<sup>3</sup> concrete
- Approximately 90t steel fabric reinforcement
- 2 week Installation Program



## Project Data

The **design** and **construction** of a 20,000m<sup>2</sup> floorslab for GSE Norway. Reinforced with steel mesh the floorslab was **installed in 2 weeks** in conjunction with one of the company's Somero SXP laserscreed machines.



## Offices throughout the UK & Scandinavia

**Head Office** Stuarts Industrial Flooring Limited  
 Stuart House, Trinity Road, Kingsbury Link, Tamworth B78 2EX  
 Tel: 01827 871140 Fax: 01827 871144 Email: [flooring@stuartsflooring.co.uk](mailto:flooring@stuartsflooring.co.uk)

**Scandinavian office**  
 Værkstedsvej 12, 5500 Middelfart, Denmark.  
 Tel: +45 70 70 28 68

Michael Frederiksen      Per Olesen  
 Mobile: +45 30 36 18 14      Mobile: +45 28 90 90 24



[www.stuarts-flooring.co.uk](http://www.stuarts-flooring.co.uk)